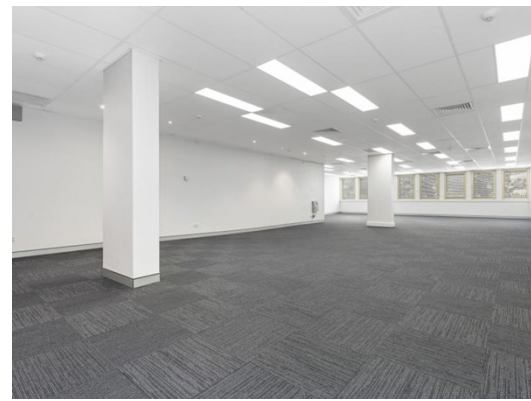
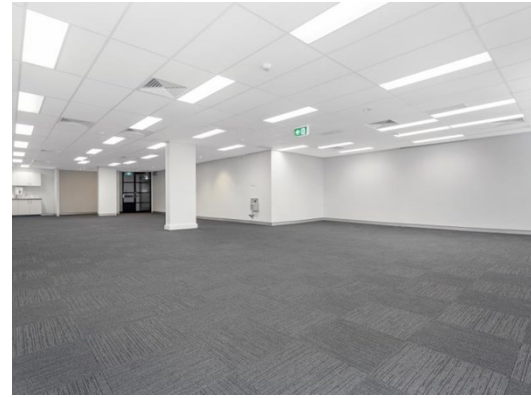




For Lease



12 Mount Street NORTH SYDNEY

Level 4 Suite 4.01

LOCATION:

Situated on Mount Street, with rear access from Wheeler Lane, 12 Mount Street is near retail, café and restaurant amenity. With an address in the North Sydney CBD, tenants are sure to capitalise on the properties location and proximity to the Treehouse Hotel, North Sydney Train Station, North Sydney Post Office and Greenwood Plaza.

DESCRIPTION:

RENT:	\$
RENT \$/SQM:	\$
AREA:	141.00 sqm
OUTGOINGS:	Not Applicable - Gross Rental
PARKING:	3 Car spaces - \$550 pcm each + GST + Levy
NABERS RATING:	N/A
COMMENTS:	

CONTACT:

Lachlan Worthington
0421 777 889
Lachlan.Worthington@propertyfox.com.au

T 02 9438 1888 **E** enquiry@propertyfox.com.au **W** propertyfox.com.au

Sydney CBD
Suite 8.03
Level 8, 14 Martin Place
Sydney NSW 2000

Sydney North
Suite 12
Level 1, 67 Christie Street
St Leonards NSW 2065

Sydney West
Ground Floor
79 George Street
Parramatta NSW 2150



Misrepresentation act - these details and measurements herein do not form any part of any contract and whilst every effort has been made to ensure accuracy, this cannot be guaranteed.