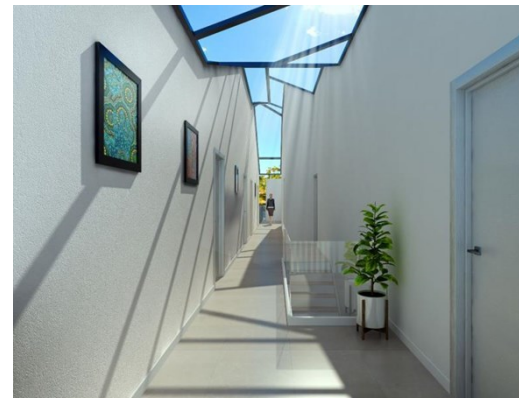




For Sale



3 Newman Street MORTDALE

Boutique corner site with DA approval for an 17 room boarding house

PREMISES	AREA (SQM)	SALE PRICE	COMMENTS
Whole Site	588.00		

LOCATION

The Boarding house is located close to two train stations, Mortdale and Penshurst, and is approximately 7-8 minutes' walk. This prominent corner site is situated on the high end of the street and is well serviced by public transport and other local amenities, being minutes away from Mortdale and Penshurst shopping villages.

DESCRIPTION

Key features include:

- DA approved Boarding house for 17 rooms + communal room + 9 dedicated spaces of basement parking.
- One of the last approvals under the old legislation
- CC Submitted and in progress.
- Site area totalling 588 sqm
- Easy access to motorways.

AUCTION DATE AND TIME

10:30am, Thursday 25 March 2020

ADDRESS

DEXUS Place
Level 5, 1 Margaret Street
Sydney NSW 2000

OUTGOINGS:

T 02 9438 1888 **E** enquiry@propertyfox.com.au **W** propertyfox.com.au

Sydney CBD

Suite 8.03
Level 8, 14 Martin Place
Sydney NSW 2000

Sydney North

Suite 12
Level 1, 67 Christie Street
St Leonards NSW 2065

Sydney West

Ground Floor
79 George Street
Parramatta NSW 2150



Misrepresentation act - these details and measurements herein do not form any part of any contract and whilst every effort has been made to ensure accuracy, this cannot be guaranteed.



For Sale

CAR PARKING:

CONTACT:

Tom Oviden
0481 792 189
tom.ovenden@propertyfox.com.au

Tim Fox
0431 32 8989
Tim.Fox@propertyfox.com.au

T 02 9438 1888 **E** enquiry@propertyfox.com.au **W** propertyfox.com.au

Sydney CBD
Suite 8.03
Level 8, 14 Martin Place
Sydney NSW 2000

Sydney North
Suite 12
Level 1, 67 Christie Street
St Leonards NSW 2065

Sydney West
Ground Floor
79 George Street
Parramatta NSW 2150

