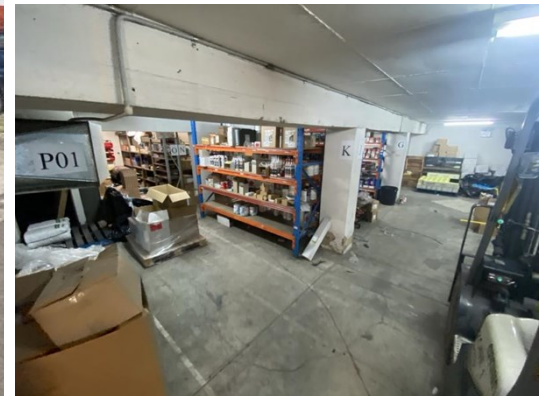
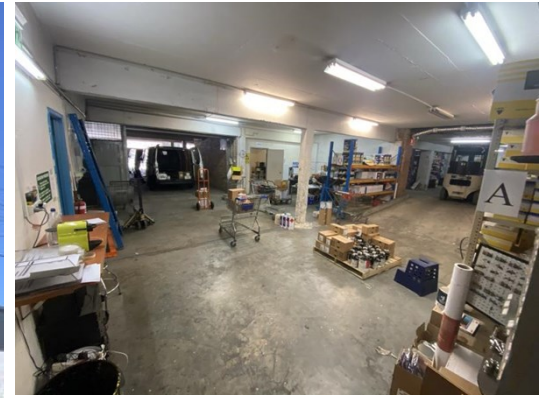




For Lease



82-84 Hotham Parade ARTARMON WAREHOUSE

Artarmon's Most Functional Warehouse

LOCATION:

This property is located on Hotham Parade which is one of the most easily accessible corridors from the Pacific highway given the traffic light intersection at the top of the hill. The property has huge exposure to passing traffic and is easy to find and access from both Hotham Parade and Sawyer Lane.

DESCRIPTION:

- 550sqm Approximately
- Drive Thru Access
- 4 Car spaces

Functional Warehouse with office and storage + exclusive bathrooms.

Key features include:

- 550 sqm approximately
- 4 Car Spaces
- Drive Thru Access
- Rear lane access
- Surrounded by quality tenants and amenity
- Signage opportunity

RENT:	\$/sqm pa Gross (+GST)
	\$ pa Gross (+GST)
AREA (SQM):	
	Warehouse 550.00
	Total 550.00

OUTGOINGS: \$/sqm pa (+GST) approx.
\$ pa (+GST)

PARKING: 4 car spaces

COMMENTS:

CONTACT:

Michael Wydeman
0411 221 405
Michael.Wydeman@propertyfox.com.au

Lachlan Worthington
0421 777 889
Lachlan.Worthington@propertyfox.com.au

T 02 9438 1888 **E** enquiry@propertyfox.com.au **W** propertyfox.com.au

Sydney CBD

Suite 8.03
Level 8, 14 Martin Place
Sydney NSW 2000

Sydney North

Suite 12
Level 1, 67 Christie Street
St Leonards NSW 2065

Sydney West

Ground Floor
79 George Street
Parramatta NSW 2150



Misrepresentation act - these details and measurements herein do not form any part of any contract and whilst every effort has been made to ensure accuracy, this cannot be guaranteed.