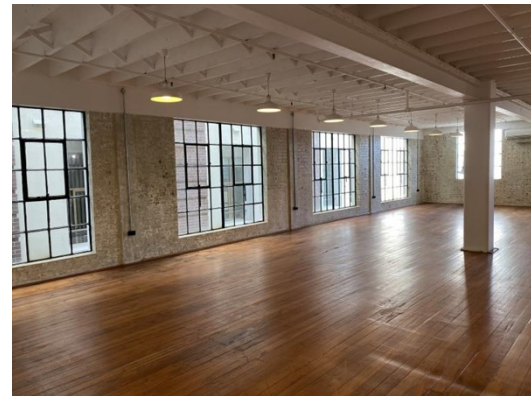
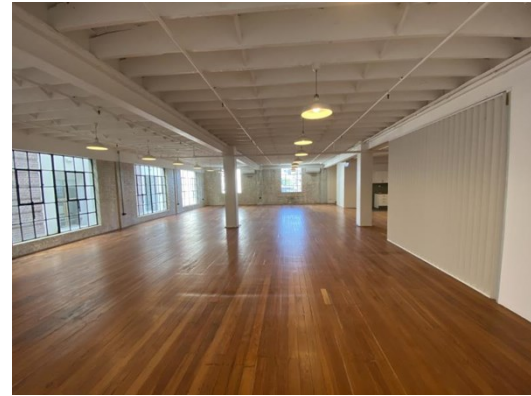




# For Lease



## 104-112 Commonwealth Street SURRY HILLS

### Level 4 Suite 2

#### LOCATION:

104-112 Commonwealth Street is in close proximity to a wide range of amenities, including cafes, health clubs, retail, and is walking distance to Central Station. The property is well placed to benefit from the trendy surroundings and culture of Sydney's very own SoHo.

#### DESCRIPTION:

- Large Open Plan
- Two Versatile Office Rooms
- Dedicated Bathroom and Kitchen

The property features a large, open plan floor plate with high ceilings and large glass pane windows, ensuring an abundance of natural light and air flow. The space comes equipped with two dedicated office rooms, with the opportunity to adapt the space creatively. The space offers a dynamic opportunity to be placed within the historic Berman House, giving tenants a chance to contribute to the Suburbs historical identity.

#### Key Features Include:

- 291 sqm of converted office space on level 4 suite 2
- Kitchen space
- Two versatile office rooms
- Polished wooden floorboards
- Large open plan with high ceiling and glass pane windows allowing for beautiful natural lighting

|                       |                                  |
|-----------------------|----------------------------------|
| <b>RENT:</b>          | \$                               |
| <b>RENT \$/SQM:</b>   | \$                               |
| <b>AREA:</b>          | 291.00 sqm                       |
| <b>OUTGOINGS:</b>     | Garbage Fee: \$1,800.00 pa + GST |
| <b>PARKING:</b>       | N/A                              |
| <b>NABERS RATING:</b> | N/A                              |
| <b>COMMENTS:</b>      | Available immediately            |

#### CONTACT:

Tom Ovenden  
0481 792 189  
tom.ovenden@propertyfox.com.au

**T** 02 9438 1888    **E** enquiry@propertyfox.com.au    **W** propertyfox.com.au

#### Sydney CBD

Suite 8.03  
Level 8, 14 Martin Place  
Sydney NSW 2000

#### Sydney North

Suite 12  
Level 1, 67 Christie Street  
St Leonards NSW 2065

#### Sydney West

Ground Floor  
79 George Street  
Parramatta NSW 2150



Misrepresentation act - these details and measurements herein do not form any part of any contract and whilst every effort has been made to ensure accuracy, this cannot be guaranteed.



# For Lease

**T** 02 9438 1888   **E** [enquiry@propertyfox.com.au](mailto:enquiry@propertyfox.com.au)   **W** [propertyfox.com.au](http://propertyfox.com.au)

**Sydney CBD**  
Suite 8.03  
Level 8, 14 Martin Place  
Sydney NSW 2000

**Sydney North**  
Suite 12  
Level 1, 67 Christie Street  
St Leonards NSW 2065

**Sydney West**  
Ground Floor  
79 George Street  
Parramatta NSW 2150



Misrepresentation act - these details and measurements herein do not form any part of any contract and whilst every effort has been made to ensure accuracy, this cannot be guaranteed.