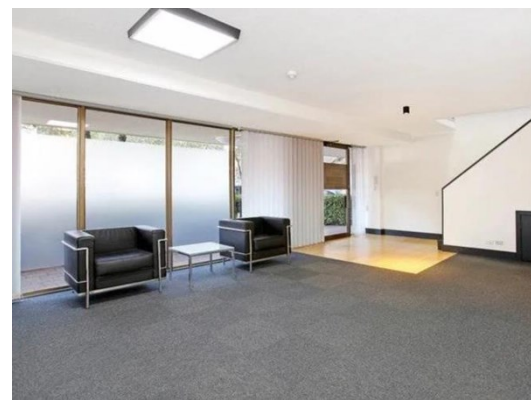




# Lease



## 174 Pacific Highway NORTH SYDNEY

### Unit 7

#### LOCATION:

Well-presented commercial property situated in a low maintenance mixed used building boasting great exposure to Pacific Highway

#### DESCRIPTION:

- Completely self contained
- Split level, efficient layout
- Ducted a/c throughout

Perfect self contained office premises with enormous ambience - reception, kitchen, meeting and storage rooms, partitioned office and open plan area with balcony.

Property features include:

- Completely self contained
- Split level, efficient layout
- Ducted a/c throughout
- Partitioned office/boardroom
- Ground floor exposure
- Toilets each level, shower
- North facing with balcony
- Kitchenette
- Basement parking available

Contact us for more information today!

#### RENT:

\$

#### AREA:

141.00 sqm

#### OUTGOINGS:

Estimated at \$160/sqm pa

#### PARKING:

2 car space

#### COMMENTS:

-Available 10/12/2019

#### CONTACT:

Lachlan Worthington  
0421 777 889  
Lachlan.Worthington@propertyfox.com.au

**T** 02 9438 1888    **E** enquiry@propertyfox.com.au    **W** propertyfox.com.au

#### Sydney CBD

Suite 8.03  
Level 8, 14 Martin Place  
Sydney NSW 2000

#### Sydney North

Suite 12  
Level 1, 67 Christie Street  
St Leonards NSW 2065

#### Sydney West

Ground Floor  
79 George Street  
Parramatta NSW 2150

