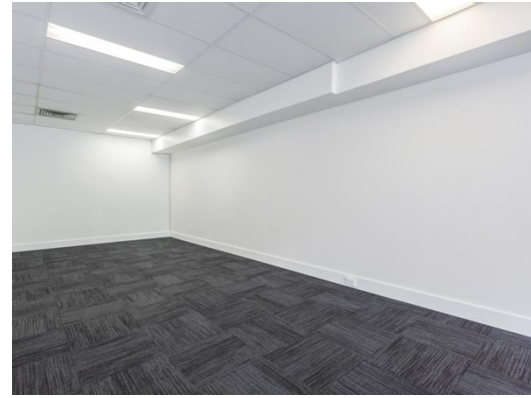




# For Lease



## 60-62 Willoughby Road CROWS NEST

### Level 1 Suite 1.02

#### LOCATION:

Located right in the heart of Crows Nest, 60-62 Willoughby Road is a great location for any business.

#### DESCRIPTION:

- PRICED TO LEASE
- Great location
- Abundance of natural light

With an abundance of natural light and in a great location in the heart of Willoughby Rd, this space won't stay vacant for long.

Refurbishment includes:

- New carpet
- Freshly painted
- New ceiling tiles

Call PropertyFox today for further details or an inspection.

<b>RENT:</b>	\$
<b>RENT \$/SQM:</b>	\$
<b>AREA:</b>	122.00 sqm
<b>OUTGOINGS:</b>	Gross Rental
<b>PARKING:</b>	Two Car Spaces (\$350 per space pcm + GST)
<b>NABERS RATING:</b>	N/A
<b>COMMENTS:</b>	

#### CONTACT:

Lachlan Worthington  
0421 777 889  
Lachlan.Worthington@propertyfox.com.au

**T** 02 9438 1888    **E** enquiry@propertyfox.com.au    **W** propertyfox.com.au

#### Sydney CBD

Suite 8.03  
Level 8, 14 Martin Place  
Sydney NSW 2000

#### Sydney North

Suite 12  
Level 1, 67 Christie Street  
St Leonards NSW 2065

#### Sydney West

Ground Floor  
79 George Street  
Parramatta NSW 2150

